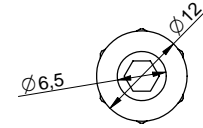
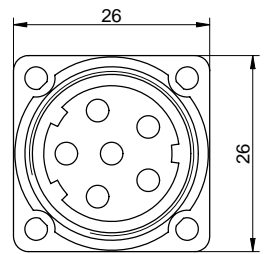
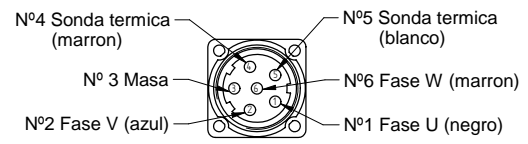
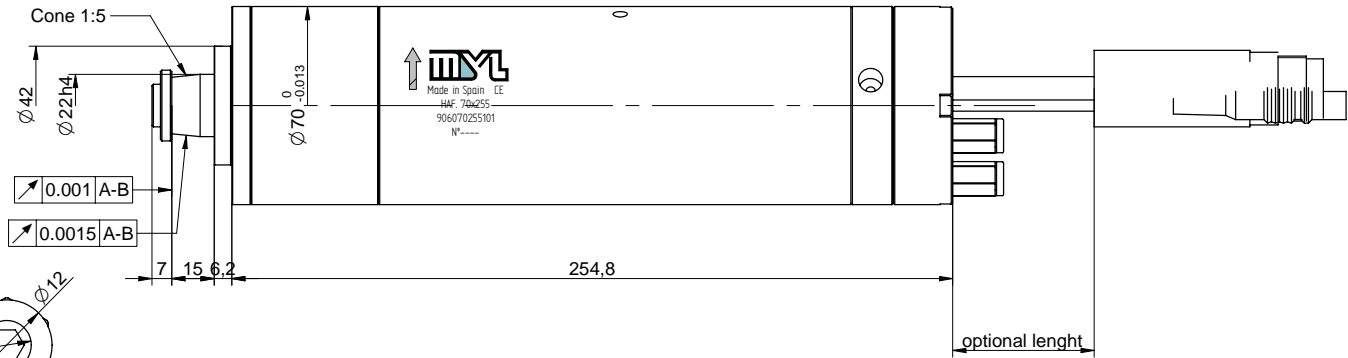
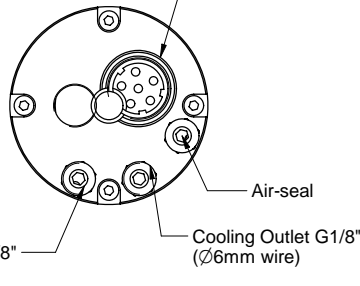


Conector tipo bega 127 nn 00 00 0006 000  
 Base recta 6 vias  
 Contact PIN 2MM GE 2,5-4,0 MM 61.023.11  
 BSTA 085 FR 23 42 0035 003 06 way 9,5-14,5MM



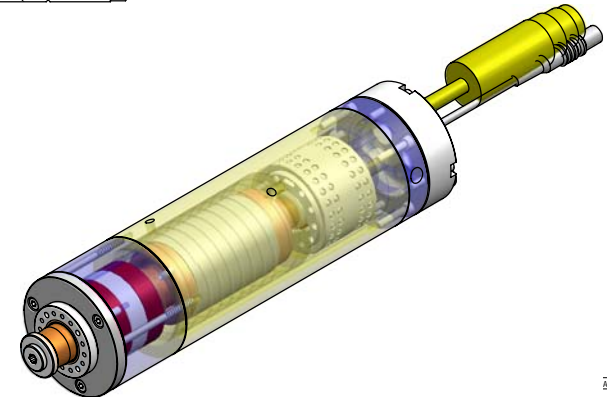
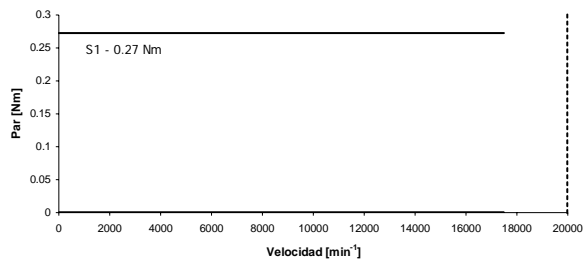
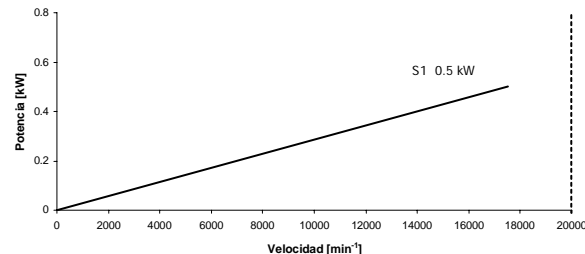
FRONT BEARINGS ID25/NS ABEC9  
 REAR BEARINGS ID15/NS ABEC9

| Electrospindle HAF.70-15-05 |                        |
|-----------------------------|------------------------|
| Type                        | HAF 70-15-05           |
| Rotation Hand               | Right                  |
| Taper                       | $\phi 22$ cone / 1 : 5 |
| RPM Max.                    | 17.500 R.P.M.          |
| Lubrication                 | Grease                 |
| Weight                      | 7 Kgs                  |
| Working position            | Horizontal             |

| Electric Plug |        |             |
|---------------|--------|-------------|
| Nº pin        | COLOUR | DESCRIPCION |
| 1             | Black  | Phase V     |
| 2             | Blue   | Phase U     |
| 3             | Earth  | Earth       |
| 4             | Black  | Thermistor  |
| 5             | White  | Thermistor  |
| 6             | Brown  | Phase W     |

Thermistor type PTC 130°C

| Electric Datas MYL HAF. 70-15-05 |   |  |  |        |
|----------------------------------|---|--|--|--------|
| Type Rotor stator                | Stator 142462005018/ Rotor 143018005018 |  |  |        |
| Power kW S1                      |   |  |  | 0.5    |
| RPM                              |   |  |  | 17.500 |
| V                                |   |  |  | 220    |
| A                                |   |  |  | 2      |
| Hz                               |   |  |  | 334    |



Talleres MYL, s.a.

|                 |                         |             |           |              |
|-----------------|-------------------------|-------------|-----------|--------------|
| Dibujado        | ainara                  |             | 26-10-06  |              |
| Comprobado      |                         |             |           |              |
| Material        | Dimensiones             |             |           |              |
| Peso Bruto      | Peso pieza              | Tratamiento | Dureza    | Escala       |
|                 | 6.74 Kg.                |             |           | 113          |
| Maquina/Husillo | HAF.70 15.000 RPM 0.5KW |             | Plano No  | 906070255101 |
| Grupo           |                         |             |           |              |
| Denominacion    | CONJUNTO                |             | Sustituye |              |

|                 |                    |                        |                      |
|-----------------|--------------------|------------------------|----------------------|
| TOLERAN. GENER. | D1/N1/16S          | DI FERRENCI AS         | SUPERI OR/VI NFERIOR |
| LONGITUDINALES  | REDONDEOS-BI SELES | ANGULARES (LADO CORTO) |                      |
| 0.5 - 6         | +0.1               | 0.5 - 3                | +0.2                 |
| 6 - 30          | +0.2               | 3 - 6                  | +0.5                 |
| 30 - 120        | +0.5               | 6 - 30                 | +1                   |
| 120 - 400       | +0.8               | 30 - 120               | +2                   |
| 400 - 1000      | +1                 | 120 - 400              | +4                   |
| 1000 - 2000     | +1.2               | ESQUINAS SIN           | INDICACION           |

